



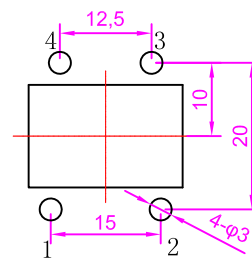
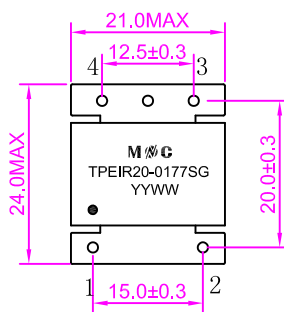


-  IEC60950 Compliant.
-  RoHS Compliant.
-  Surface Mount Device.
-  Operating temperature range (Including self temperature rise): -40 °C to +125 °C.

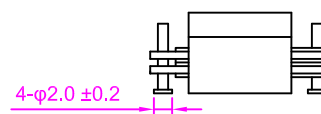
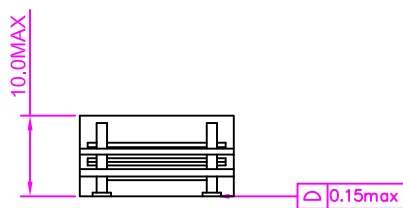


Application							
Output Power (W)	Work Frequency (KHz)	Circuit topology	Input Voltage (V)	Output Voltage (V)	Output Current (A)		
50	200	Forward with active clamp	48	5	10		
Electrical Specifications @25°C							
Part Number	Turns Ratio(±3%)	OCL(uH±20%) @100KHz,1V	LK(uH max) @100KHz,1.0V	DCR (mΩ max)			HI-POT (Vrms)
	1-2:4-3	1-2	1-2 (short other pins)	1-2	4-3	/	Pri-Sec
TPEIR20-0177SG	8:2	120	0.35	30	2.0	/	1500Vdc

SCHEMATICS DIMENSIONS

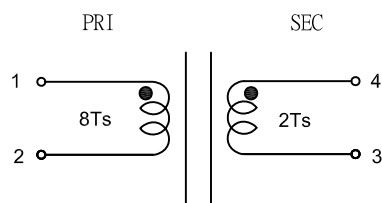


SUGGESTED PAD LAYOUT



Unless otherwise specified all tolerances are:±0.25 in mm

SCHEMATICS



○ Start Point