



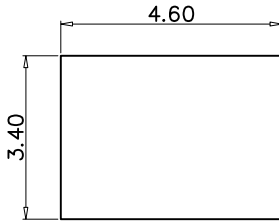


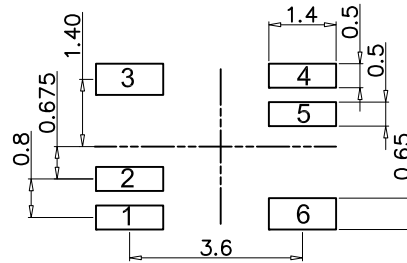
-  Meets IEEE 802.3an Standards.
-  Designed For 10G BASE-T Applications, Surface Mount Type.
-  Operating Temperature Range: -40°C to +85°C.
-  RoHS Compliant.

Part Number	Electrical Specifications @25°C						
	Turns Ratio (±5%)	OCL(uH Min) @100KHz,0.1V With 8mA DC Bias	CWW(pF Max) @100KHz,0.1V	DCR (Ω Max)	Insertion Loss (dB Max)	Return Loss (dB Min)	HI-POT (Vrms)
MA020G00	1CT:1CT	120	35	1.2	-0.5@1-65MHz -0.8@65-125MHz -2.0@125-400MHz -4.5@400-500MHz	-20.5@1-100MHz -20.5+20.75*Log(F/40)@100-200MHz -12@200-300MHz -9.5@300-400MHz -7.5@400-500MHz	1500

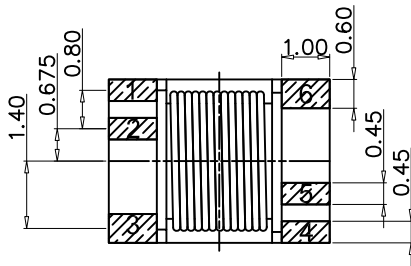
## MECHANICAL



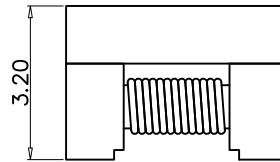
TOP VIEW



SUGGEST LAYOUT



BOTTOM VIEW



FRONT VIEW

Unless otherwise specified all tolerances are:±0.25 in mm

## SCHEMATICS

