



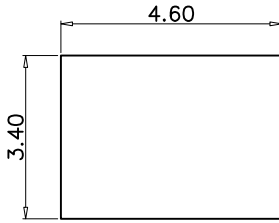


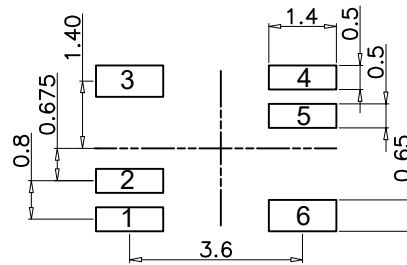
-  Meets IEEE 802.3bz Standards.
-  Designed For 5.0G BASE-T Applications, Surface Mount Type.
-  Operating Temperature Range: -40 °C to +85 °C.
-  RoHS Compliant.

Part Number	Electrical Specifications @25°C						
	Turns Ratio (±5%)	OCL(uH Min) @100KHz,0.1V With 8mA DC Bias	CWW(pF Max) @100KHz,0.1V	DCR (Ω Max)	Insertion Loss (dB Max)	Return Loss (dB Min)	HI-POT (Vrms)
FA020G00	1CT:1CT	120	35	1.2	-0.5@1-50MHz -1.0@50-125MHz -2.0@125-250MHz	-23@1.0-40MHz -23+10*Log(F/40)@40-250MHz	1500

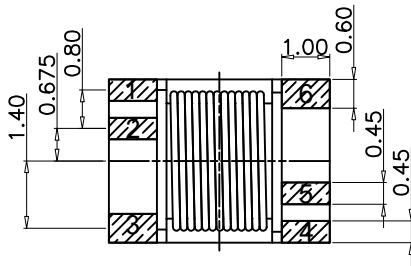
MECHANICAL



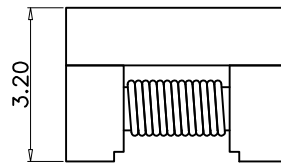
TOP VIEW



SUGGEST LAYOUT



BOTTOM VIEW



FRONT VIEW

Unless otherwise specified all tolerances are:±0.25 in mm

SCHEMATICS

