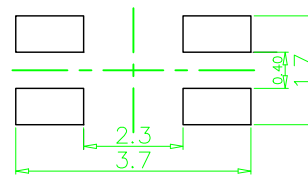
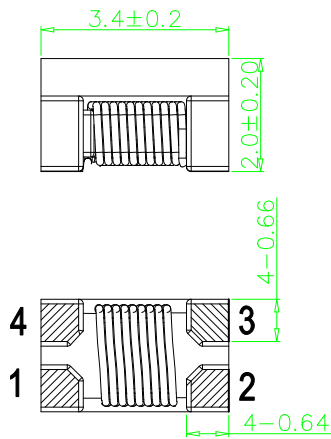


- High Common Mode Impedance at High Frequency.
- Excellent Noise Suppression Performance.
- Small Size and Low Profile, Surface Mount Type.
- Operating Temperature Range: -40°C to +85°C.
- RoHS Compliant.

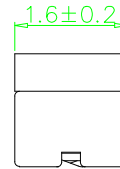
Electrical Specifications @25°C

Part Number	Inductance 100K 0.1V (uH Min)	Capacitance 100K 0.1V (pF Max)	DC Resistance (Ω Max)	Rated Current mA Max	Rated Volt (Vdc)	Withstand Volt 1mA 1S (Vdc Max)	IR M(Ω Min)
CM3216A-600	60	25	1.7	200	50	125	10

MECHANICAL DIMENSIONS (unit:mm)

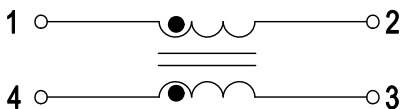


Recommended PAD Layout



Unless otherwise specified all tolerances are:±0.25mm

SCHEMATIC



Impedance Frequency

